



DE

Bedienungsanleitung: Schlüsseldepot mit Zahlenschloss 420 / 440

EN

Operating instructions: Key depot with combination lock 420 / 440

FR

Les instructions d'utilisation : Dépôt de clés avec serrure à combinaison 420 / 440

ES

Instrucciones de operación: Depósito de llaves con cerradura de combinación 420 / 440

IT

Istruzioni per l'uso: Cassetta di deposito chiavi con serratura a combinazione numerica 420 / 440

NL

Gebruiksaanwijzing: Sleutelkluis met cijferslot 420 / 440

Thank you for choosing a high-quality product from **masunt**. We are pleased to welcome you as a new member to our customer base. **Over 12,000 satisfied customers** already rely on masunt products to make their key handover processes smarter.

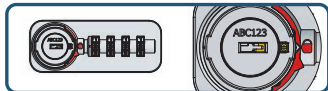
Key depot with combination lock

IMPORTANT NOTE:

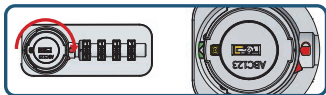
Before installation, the factory-set code 0000 should be changed (see „Change Code“)!

- The key safe is designed for use both indoors and in protected outdoor areas.
- Protect the key safe from splashing water, dirt, and fire.
- Do not oil or grease the lock and number wheels.
- Clean the lock only with a damp cloth.
- Treat stainless steel regularly with stainless steel care products.

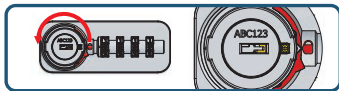
Unlock / lock



Enter factory code (0000) or personal code (****).



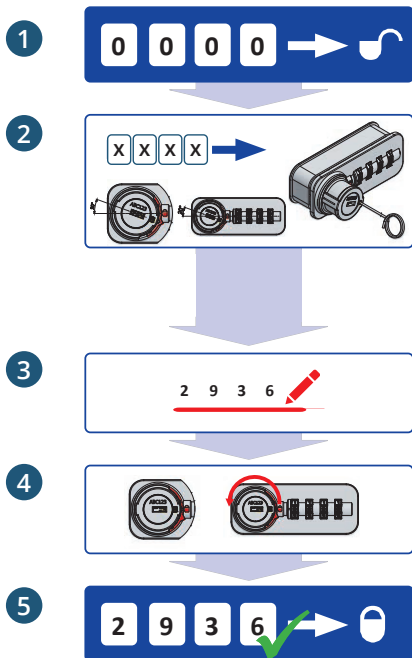
Turn the knob clockwise to the „open“ position.



Turn the knob counterclockwise to the „locked“ position.

Note: For security reasons, the code wheels automatically reset to „0000.“

Change Code



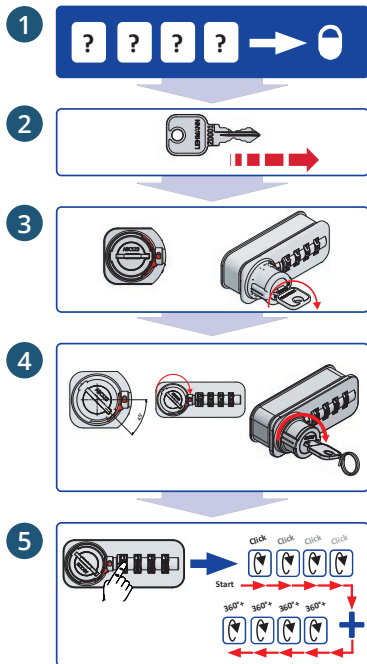
1. Initial state: All digits set to „0,“ lock is closed.
2. Set the factory code or current user code.

Depress the coding pin in the rotary knob (e.g., using a ballpoint pen) and, with the coding pin depressed, rotate the knob approximately 20° until the arrow on the knob is aligned centrally with the red triangle on the lock housing.

You will feel a slight resistance.

3. Set and record the personal code.
4. Rotate the knob back to the closed position. The coding pin jumps back to the starting position. Open and close the lock. The code is scrambled.
5. The lock is closed, and the new personal code is saved.

Reset Code (Emergency Opening)

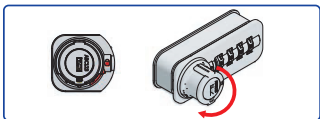


1. Access code is unknown. Lock is closed.
2. Insert emergency key.
3. Rotate the key only 180° clockwise. The rotary knob remains in the starting position.
4. Depress the coding pin in the rotary knob (e.g., using a ballpoint pen) and, with the coding pin depressed, rotate the knob approximately 45° to the stop.
5. Turn the four code wheels from the rotary knob one by one until you hear a „click“ or they rotate more than 360°. If a code wheel cannot be turned further, proceed to the next one. Afterward, rotate the code wheels in reverse order for at least 360°.
6. Hold the rotary knob in its existing position and ONLY turn the key counterclockwise 180° and remove it.
7. Continue rotating the rotary knob clockwise until it stops. The code resets to „0000.“
8. Ensure that all code wheels are set to „0000.“ If the code wheels are NOT on „0000,“ manually turn them to „0000.“

6



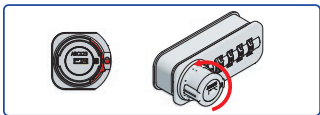
7



8



9



10



9. Turn the rotary knob counterclockwise until it stops. The coding pin jumps back to the starting position.
10. The RESET is complete. The code is „0000,“ and the lock is ready for use again.

Please register your product for support and spare parts service:

Send us an email with the **invoice number** and **invoice date** (If purchased through a third party, please provide a copy of the invoice.) to info@masunt.com. Also, provide the **code sequence (ZXXXX)** on the sticker above the barcode on the product packaging. Thank you.